

PARK RIDGE  
ELEMENTARY  
KINDERGARTEN  
EXPERIENCE  
2020-2021



For registration, please call (754) 322-7700 or email Ms. Betancourt at [johanna.betancourt@browardschools.com](mailto:johanna.betancourt@browardschools.com) or [registrations@browardschools.com](mailto:registrations@browardschools.com)

# Kindergarten Team



- ❖ Ms. Joseph
- ❖ Mrs. LaConcha
- ❖ Ms. Perales
- ❖ Ms. Shelton
- ❖ Mrs. Snider
- ❖ Mrs. Gibbons
- ❖ Volunteers  
(Grandmas)

# Attendance

- ❖ All ABSENCES must be excused within 24 hours. Your child's attendance is vital to their growth. Attendance Line (754) 322-7702
- ❖ School begins at 7:45 a.m. sharp! Students arriving after 7:55 are considered TARDY.
- ❖ Students hours are from 8:15a.m. to 3:15p.m. Bring ID for Early sign out.
- ❖ Dismissal starts at 3:05p.m. by bus, ASP, walkers and car riders.
- ❖ Before care - contact local daycares;
- ❖ After care - ASP/ Boys and Girls Club



# Before and After Dismissal

- Breakfast starts at 7:30 a.m. (Free for all students)
- To ensure your child's safety, all changes in a student dismissal must be submitted in writing to the teacher or to the front office by a parent or guardian.
- Student drop-off starts at 7:35 a.m.( if not eating breakfast) First and Second days parents can walk students to class. Third day is the Independence Day. Fill out Rainy Day Procedures Form.
- The Kindergarten Curriculum has changed. It is very rigorous. It is imperative that your child attends school regularly to be successful.

# Standards Driven Curriculum



- ❖ Curriculum Mapping (K Best Standards)
- ❖ Literacy : Leveled Reader FootPrints; Science A-Z; Scholastic; Phonics (PSW); Shared Reading; GoMath
- ❖ Social Studies and Science Standards
- ❖ K Screening - Incoming students will be tested on Letter Names, Letter Sounds and Concepts of Print, and BAS.



## **Important Days:**

First Day of School:

August 19, 2020

Meet and Greet:

August 18, 2020

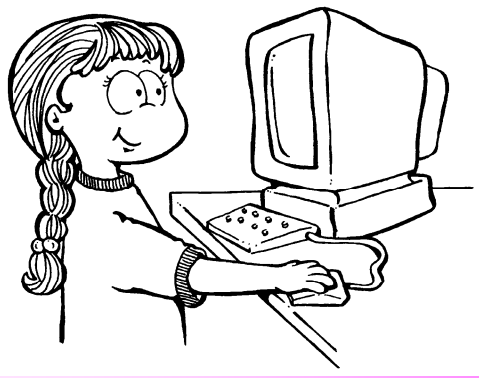
## **Supply List:**

Supply List is inside of  
the registration folder.

# Kindergarten Themes

- ❖ Families
- ❖ Friends
- ❖ Transportation
- ❖ Food
- ❖ Animals
- ❖ Neighborhood
- ❖ Weather
- ❖ Plants
- ❖ Amazing Creatures
- ❖ I Know A Lot

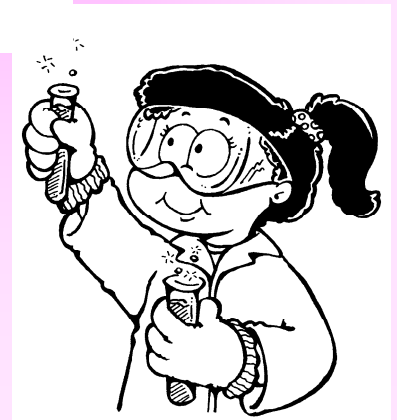
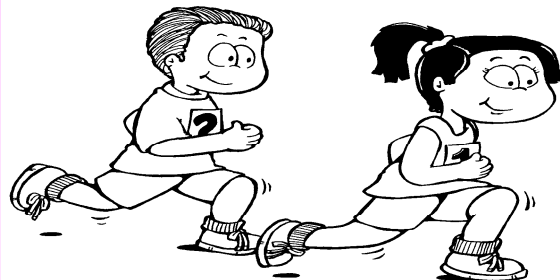
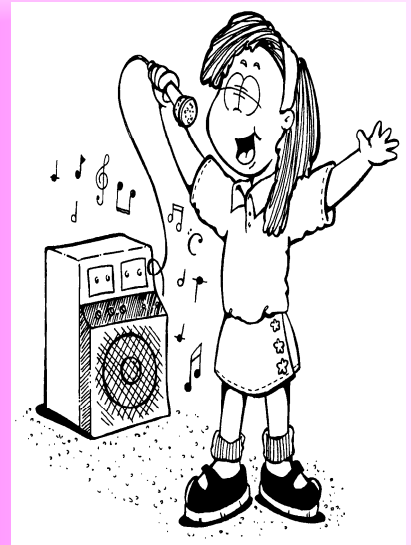




# Special Classes

Rotating Schedule:

- ❖ P.E.
- ❖ Music
- ❖ PE 2
- ❖ Media





# Classroom Rules



- ❖ Listen and follow directions.
- ❖ Be responsible;
- ❖ Always try your best.
- ❖ Respect others;
- ❖ Work cooperatively;
- ❖ Keep hands and feet to ourselves.

# Safety Reminders

❖ Emergency Codes:

Code Red

Code Yellow

Code Black

Code Blue

Code Orange

Code Brown

Code Green



# Behavior Plan

- ❖ **Students** stay on green all day will get privileges.
- ❖ Students who demonstrate inappropriate behavior will receive a warning, if inappropriate behavior continues students will lose privileges.
- ❖ Rewards for good behavior are: stickers, treats, stamps, happy notes, and treasure box.
- ❖ We welcome classroom donations.



# Student Assessment



- ❖ Report cards are issued every nine weeks.
- ❖ Conferences: Two are required for the school year. Additional conferences will be scheduled as needed.
- ❖ Florida Kindergarten Readiness Screener
- ❖ BAS
- ❖ Letter Names, Sounds and Concepts of Print
- ❖ Unit 5/GoMath

# Uniform Policy

- ❖ All students must wear uniforms Monday through Friday.
- ❖ Approved uniform bottoms are:  
khaki or navy blue long pants;  
khaki or navy blue shorts;  
khaki or navy blue skirts or skorts; khaki or navy blue jumpers;
- ❖ Grey, navy, blue and white polo shirts
- ❖ Vendors: Walmart, Target, Old Navy, Carlyn School Uniform, Uniform Stores



# Reminders



- ❖ Check book bags daily.
- ❖ Return student folder daily.
- ❖ Homework is due everyday Friday. Please help them, but do not answer the questions.
- ❖ Homework is aligned to the skills taught daily. It provides your child an opportunity to practice the new skill.
- ❖ Bring a healthy snack daily.
- ❖ Apply for Free and Reduced lunch at [freereducemeals@browardschools.com](mailto:freereducemeals@browardschools.com)

# Closing

- ❖ The students at Park Ridge Elementary are learning 100% of the standards 100% of the time.
- ❖ The faculty and staff at Park Ridge Elementary work as a team in order to meet the needs of all students.
- ❖ We look forward to seeing you next school year.

